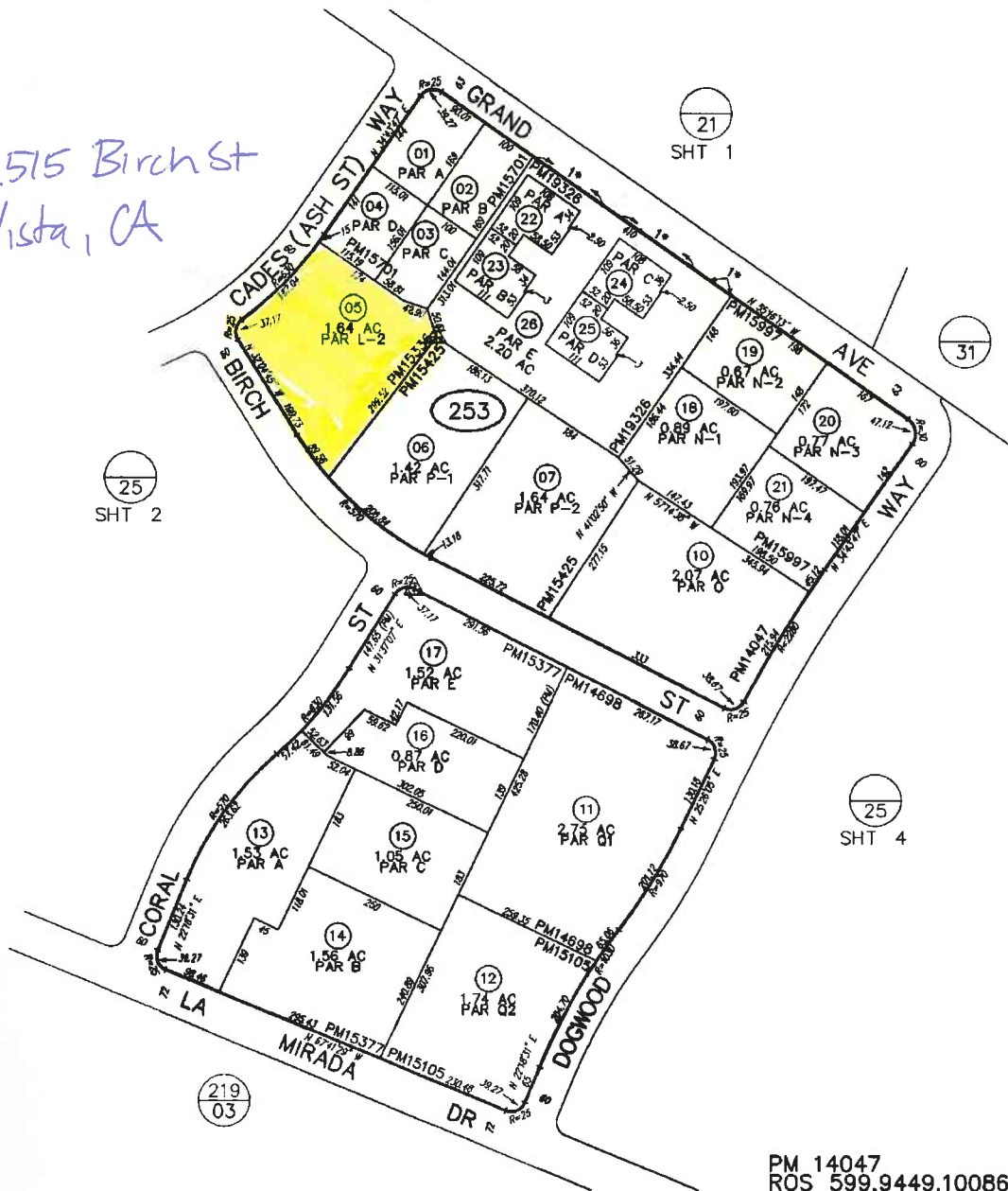


THIS MAP WAS PREPARED FOR ASSESSMENT PURPOSES ONLY. NO LIABILITY IS ASSUMED FOR THE ACCURACY OF THE DATA SHOWN. ASSESSOR'S PARCELS MAY NOT COMPLY WITH LOCAL SUBDIVISION OR BUILDING ORDINANCES.

2515 Birch St
Vista, CA



SAN DIEGO COUNTY ASSESSOR'S MAP

217-25
SHT 3 OF 10
1" = 200'



10/29/07 JAM ✓

Drawn: 01/15/90 By: TLM From: 217-250

CHANGES				
SHT	PRIOR APN	NEW APN	TR	CUT NO.
253	-250-79	01 THRU 04	90	1969 DC
	-250-	50 THRU 52		
	15.75 & 90 THRU 82	05 THRU 17	90	10019
	09	18 THRU 21	90	2338
	08	22 THRU 26	04	1848

1* NO ACCESS

PM 14047
ROS 599,9449,10086