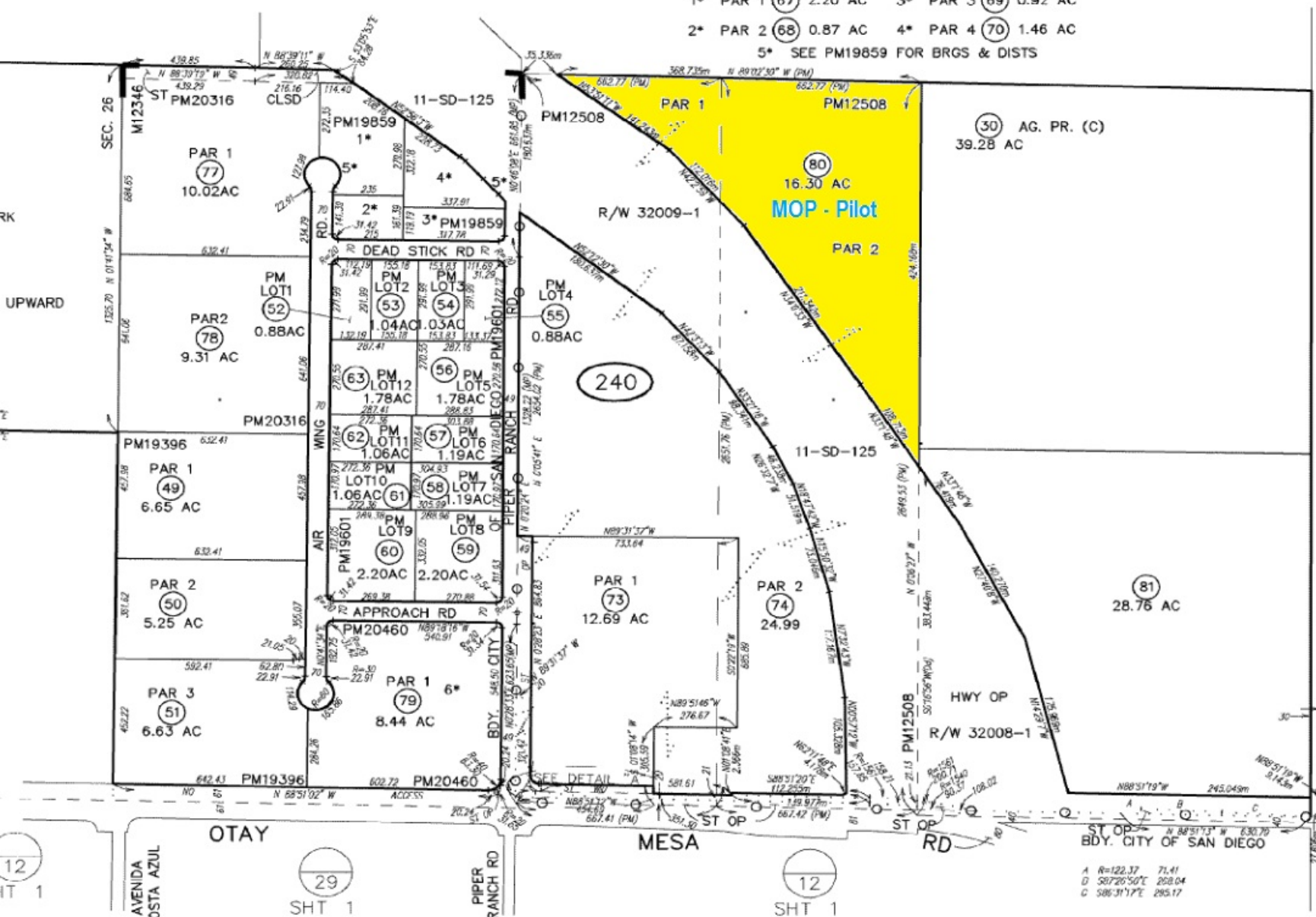


- 1* PAR 1 (67) 2.20 AC 3* PAR 3 (69) 0.92 AC
- 2* PAR 2 (68) 0.87 AC 4* PAR 4 (70) 1.46 AC
- 5* SEE PM19859 FOR BRGS & DIST



| BLK | PRIOR APN |
|-----|-----------------|
| 240 | |
| | -070-13 |
| | 14,21,22 |
| | 25 & 26 |
| | 27 |
| | 25, 26 |
| | 27 & 30 |
| | 26 |
| | 25 |
| | 01 |
| | 28 & 31 |
| | 29 |
| | 25 |
| | 17 THRU 20 |
| | 03 THRU 06 |
| | 11 THRU 14 |
| | 48 |
| | 07 THRU 09 |
| | 10 & 84 THRU 88 |
| | 45 & 47 |
| | 71 & 72 |
| | 24 |
| | 2, 15, 16 & 45 |
| | 73 |
| | 21-24 |
| | 25 |
| | 75 & 76 |
| | 32 |
| | PICKUP |
| | 48 |

A R=122.37 71.41
 D S0720'50"E 208.04
 C S08'31'7"E 295.17